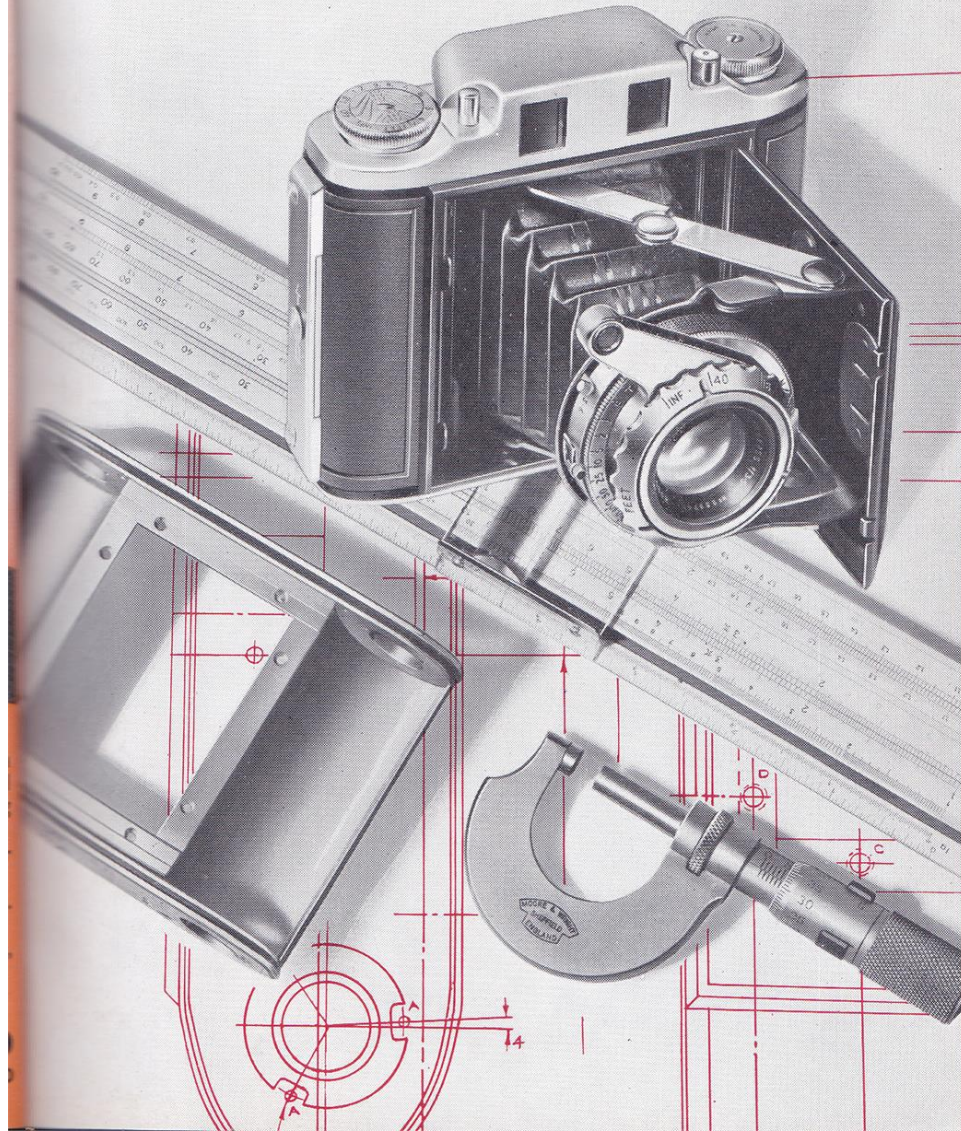
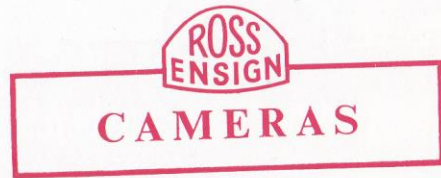


ROSS  
ENSIGN

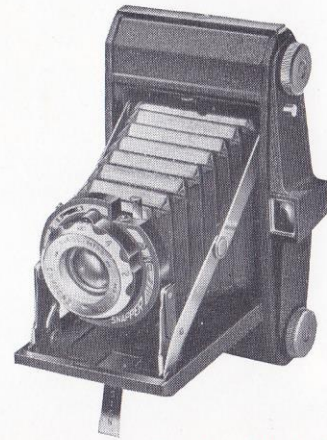
DESIGNERS REPORT





ROSS  
ENSIGN  
CAMERAS

**D**URING the last few years no photographic development has been so outstanding as the ascendancy of Ross Ensign products and proof of this claim will certainly be found in the latest range of cameras and accessories. Britain has unique design and manufacturing facilities in the Ross Ensign factories, which contribute two notable benefits to their photographic products. First, greatly improved optical and mechanical design, which only combined planning at the drawing board stage can ensure. Second, the benefits of precision engineering, allied to rigid control of optical performance, which only specialist manufacturers can exercise over their products.



*The Snapper is the ideal first folding camera for the beginner. The model illustrated is fitted with a lens in a focusing mount, optical viewfinder and synchro-flash contacts. Models with alternative combinations of lens and shutter will be available shortly.*

All Ross Ensign products have been planned to the very last detail, a notable example being that any part required for servicing may be obtained by reference to the "Ensign Service Manual" which is in the possession of

*A folding viewfinder hood, swing cradle loading chamber and pressure die-cast body are some of the new and exclusive features of the 1954 Ful-Vue Super Camera.*

every leading photographic dealer at home and abroad. It includes a service diagram from which any tiny component can be identified and renewed if ever necessary.

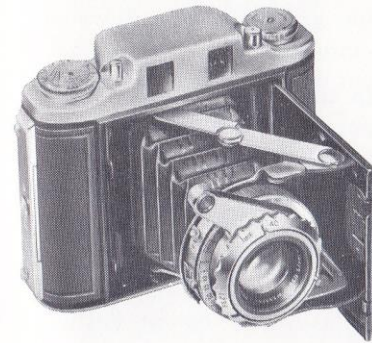
The specifications of this year's cameras show a clear understanding of the requirements expressed by the majority of keen photographers and a practical endeavour to provide good value within a reasonable price range.

The most interesting news item is that an entirely original Ful-Vue is on its way. Known as the Ful-

Vue Super, it will incorporate all the improvements and new features suggested by the manufacture of over a million of these cameras since the last model was introduced. The Ful-Vue Super will be the finest twin-lens box camera ever offered to the public. The Snapper, also, will soon be available with different combinations of lens and shutter. It will offer the beginner and the enthusiast alike ideal equipment for photography under varied lighting conditions.

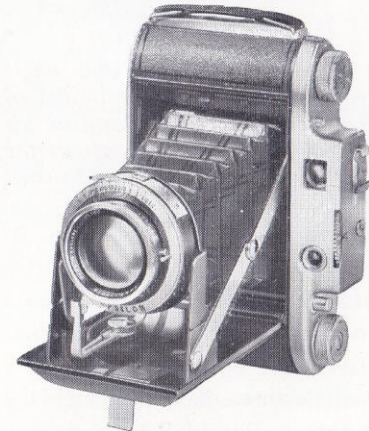
Other Ross Ensign miniatures will include the Selfix 16-20 and 12-20 series of cameras with Rosstar or Ross Xpres lenses, which are already firm favourites.

At the other end of the scale, such cameras as the Selfix 820 Special and the Autorange 16-20 will provide the experts with high-class photographic instruments which will do justice to their greater experience and skill.



*The Autorange 16-20 fitted with 75mm. Ross Xpres f/3.5 lens still holds its own as Britain's most distinguished coupled rangefinder camera. A unique feature of this model is the combination of rangefinder and Albada viewfinder.*

*The Selfix 820 Special has a built-in rangefinder and takes either twelve 2½ in. square or eight 2¼ x 3½ in. pictures on 120 or 620 roll film. The 105mm. Ross Xpres f/3.8 colour corrected and coated lens makes it an excellent model for amateur and professional alike.*





**R**OSS specialise in the construction of optical goods for every purpose and a wide range of lenses is available to manufacturers of photographic equipment, professional photographers and scientific workers in every field.



*This 5in. Ross Xpres wide angle lens in Epsilon shutter is one of the special objectives designed for use in view cameras such as the M.P.P. and the Speed Graphic.*

For well over a century an insistence on the highest possible standards of workmanship has been maintained. Since the earliest days of photography, camera manufacturers have recognised the superb quality of Ross lenses and

users have come to accept the name of ROSS as synonymous with excellence in optical performance. The R.A.F., colonial and foreign Governments and the leading commercial survey companies also insist on Ross lenses for aerial survey and reconnaissance.

In the following pages the most popular standard Ross lenses are listed and as will be seen from the tables, many of the professional lenses can now be supplied in flash synchronised shutters. Enquiries are also welcomed for a variety of optical instruments including precision equipment for lens and instrument testing.



*One of the Ross Resolux lenses specially computed for enlarging negatives up to 2½ x 3½in.*

### ROSS XPRES F/4.5 SERIES

Focal length		Field covered	Flange in. x 24 t.p.i.	Mount
in.	nominal			
6	152 mm.	4 x 5 in. or 9 x 12 cm.	2¼	* Focussing
7¼	184 mm.	4¾ x 6½ in. or 12 x 16 cm.	2⅜	* Iris
8½	216 mm.	5 x 7 in. or 13 x 18 cm.	2½	* Iris
10	254 mm.	6½ x 8½ in. or 18 x 24 cm.	2⅞	* Iris
12	305 mm.	8 x 10 in. or 20 x 25 cm.	3½	* Iris
14	356 mm.	10 x 12 in. or 25 x 30 cm.	4¼	Iris

### ROSS LENSES IN EPSILON SHUTTERS

Focal length		Type and aperture	Shutter speeds	Maximum field covered
nominal	mm.			
3 in.	75	Rosstar f/4.5	4 or 8	1⅝ x 2¼ in. or 4.5 x 6 cm.
3 in.	75	† Ross Xpres f/3.5	4 or 8	1⅝ x 2¼ in. or 4.5 x 6 cm.
3 ⅜ in.	77.5	Ross Xpres f/3.5	8	2¼ x 2¼ in. or 6 x 6 cm.
4 in.	105	† Rosstar f/4.5	4 or 8	2¼ x 3¼ in. or 6 x 9 cm.
4 in.	105	† Ross Xpres f/3.8	4 or 8	2¼ x 3¼ in. or 6 x 9 cm.
5 in.	127	Ross Xpres f/4.5 W.A.	8	4 x 5 in. or 9 x 12 cm.

### ROSS XPRES F/4 WIDE ANGLE SERIES

Focal length		Field covered at f/4	Flange in. x 24 t.p.i.	Mount
in.	nominal			
4	102 mm.	4 x 5 in. or 9 x 12 cm.	1½	* Iris
5	127 mm.	4 x 5 in. or 9 x 12 cm.	1¾	* Iris
6	153 mm.	4¾ x 6½ in. or 12 x 16 cm.	2	* Iris
8¼	210 mm.	7 x 9 in. or 18 x 24 cm.	2½	* Iris
10	254 mm.	8 x 10 in. or 20 x 25 cm.	3⅝	* Iris

### ROSS HOMOCENTRIC F/6.3 SERIES

Focal length		Field covered	Flange in. x 24 t.p.i.	Mount
in.	nominal			
7	178 mm.	4¾ x 6½ in. or 12 x 16 cm.	1⅝	* Iris
8½	216 mm.	5 x 7½ in. or 13 x 18 cm.	1¾	* Iris
10	254 mm.	6½ x 8½ in. or 18 x 24 cm.	2¼	* Iris
12	305 mm.	8 x 10 in. or 20 x 25 cm.	2½	* Iris

\* These lenses are also supplied in Compur or Compound shutters to special order.

† Denotes front cell focussing.

**ROSS XTRALUX LENSES FOR LEICA CAMERAS**

Focal length		Angle of view	Aperture	Special notes
nominal	cm.			
2 in.	5	24 mm. 27°, 36 mm. 39°	f/2	Retractable mount
3½ in.	9	24 mm. 15°, 36 mm. 22°	f/3.5	Rigid mount
5¼ in.	13.5	24 mm. 10°, 36 mm. 15°	f/4.5	Rigid mount

**ROSS RESOLUX ENLARGER LENSES**

Focal length		Aperture	Negative size covered	Flange diameter
nominal	cm.			
2 in.	5	f/3.5	1 x 1½ in. or 24 x 36 mm.	* 39 mm.
3½ in.	9	f/4	2¼ x 2¼ in. or 6 x 6 cm.	39 mm.
4¾ in.	11	f/4	2¼ x 3¼ in. or 6 x 9 cm.	39 mm.

\* Extension tubes are available for all 35 mm. enlargers if required.

**ROSS GAUGE PROJECTION LENSES**

Focal length		Field diameter	Condenser recommended
in.	nominal		
2¼	57 mm.	1	4¾ in.
4½	114 mm.	2	3½ or 7 in.
9	229 mm.	3	5½ in.

**ROSS APO PROCESS LENSES AND PRISMS**

Focal length		Full Aperture	Maximum field covered				Prisms	
			Object and Image same size		Image half size of object		Opening	
in.	mm.		in.	cm.	in.	cm.	in.	mm.
9½	241	f/10	8 x 10	20 x 25	5 x 7	10 x 16	2¼	57
13	330	f/10	10 x 12	25 x 30	8 x 10	20 x 25	3	76
18	457	f/10	14 x 18	35 x 45	11 x 14	27 x 35	3	76
21	533	f/10	16 x 20	40 x 50	13 x 16	33 x 40	3¼	83
25	635	f/10	20 x 24	50 x 60	14 x 18	35 x 45	4	102
30	762	f/12.5	20 x 30	50 x 75	20 x 24	50 x 60	4	102
36	914	f/12.5	24 x 36	60 x 90	24 x 30	60 x 75	4½	114
42	1067	f/12.5	30 x 40	75 x 100	30 x 36	75 x 90	5¼	133
48	1219	f/12.5	36 x 48	90 x 120	36 x 40	90 x 100	5¼	133

ROSS  
ENSIGN

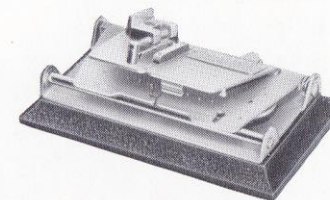
**ACCESSORIES**

**T**HE range of accessories for Ross Ensign equipment includes leather slip-in and ever-ready cases for the entire range of cameras.

A standard flash unit is also available, suitable for use on any camera fitted with synchroflash contacts. This unit may be attached to the camera by means of a bracket which is provided, or mounted on a tripod for use at a distance from the camera position.

The Ross Ensign Standard Enlarger provides the ideal home equipment for every keen photo-

grapher. It will take negatives up to 2¼ x 3¼ in. and has a coated f/4.5 lens specially designed for enlarging. Prints up to 15 x 12 in.

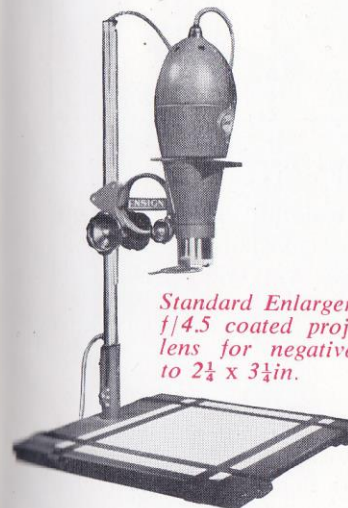


*The Ross Ensign Universal Splicer. An all-purpose model suitable for editing any type of narrow gauge cinematograph film.*

can be made on the baseboard and larger prints can be produced by rotating the lamphouse on the column.

For the cine enthusiast, Ross Ensign Universal and Popular Splicers cover every size of narrow gauge film. With the Universal model any narrow gauge film can be handled on the same instrument, while the Popular model provides a single purpose splicer for either 8mm., 9.5mm., or 16mm. film.

Ultrachrome film is available in sizes to fit any Ensign camera and its wide latitude combined with fine grain will ensure excellent results from miniature negatives.

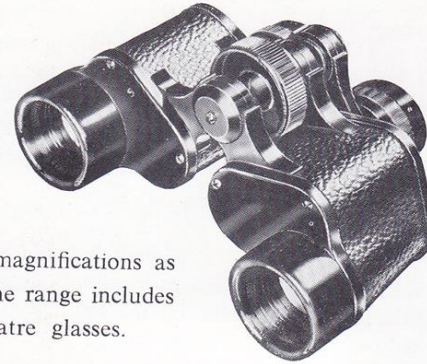


*Standard Enlarger with f/4.5 coated projection lens for negatives up to 2¼ x 3¼ in.*

ROSS  
LONDON

## BINOCULARS

**E**VERY keen sportsman chooses Ross binoculars for their incomparable definition and brilliance. These famous British binoculars are made in various sizes for every outdoor activity in different magnifications as shown in the table below. The range includes the now popular Operos theatre glasses.



Model	Magnification	Object Glass diam.	Field of view at 1000 yards
Steptron	8 x	30 mm.	150 yards
Stepvue	8 x	30 mm.	122 "
Stepruva	9 x	35 mm.	128 "
Spectaross	8 x	40 mm.	109 "
Steplux	7 x	50 mm.	122 "
Stepmur	10 x	50 mm.	115 "
Stepsun	12 x	50 mm.	96 "
Tropical 7	7 x	40 mm.	164 "
Tropical 10	10 x	50 mm.	115 "

### PROJECTION EQUIPMENT

Ross Epidiascopes are now used in the majority of large schools, universities and technical colleges for lecturing to large audiences.

This versatile teaching aid enables any type of original from solid objects to the modern film strip to be projected.

Ross 35mm. sound film projectors are also available for use in cinema and television networks.

**ROSS ENSIGN LTD., WALTHAMSTOW, LONDON, E.17.**

Cables : Enros, London.

Telephone : LARKSwood 5555. Telegrams : Enros-Easphone, London.

**Cinematograph Division : 3, North Side, Clapham Common, S.W.4**

Telephone : MACaulay 2472. Telegrams : Rossicaste, Souphone, London.